

Thank you for choosing Sunnydaze Decor. We stand behind our brand and the quality of the items we sell. Replacement parts or products will be sent at our discretion within the 1-year warranty period. Proof of purchase, with the date of purchase as well as photos of the merchandise defect, must be provided. Photos are used to determine the cause of defects and for future quality control. Register your warranty at <https://tiny.cc/SunnydazeWarranty>. If you have any questions, comments or concerns, feel free to contact us by phone at 833-982-1977, by email: customerservice@sunnydazedecor.com, or via our contact us page at <https://tiny.cc/SunnydazeContact>



MODERN ROAD OUTDOOR WATER FOUNTAIN WITH LED LIGHT LZH-041

Read all assembly and care instructions carefully before using this product.
Save this manual for future reference.

Select a smooth, level surface to place the fountain.
Assemble components on a soft, clean surface to avoid damaging the finish.

PARTS	QTY.
Fountain Body	1
Electric Submersible Pump	1
AC Adapter	1

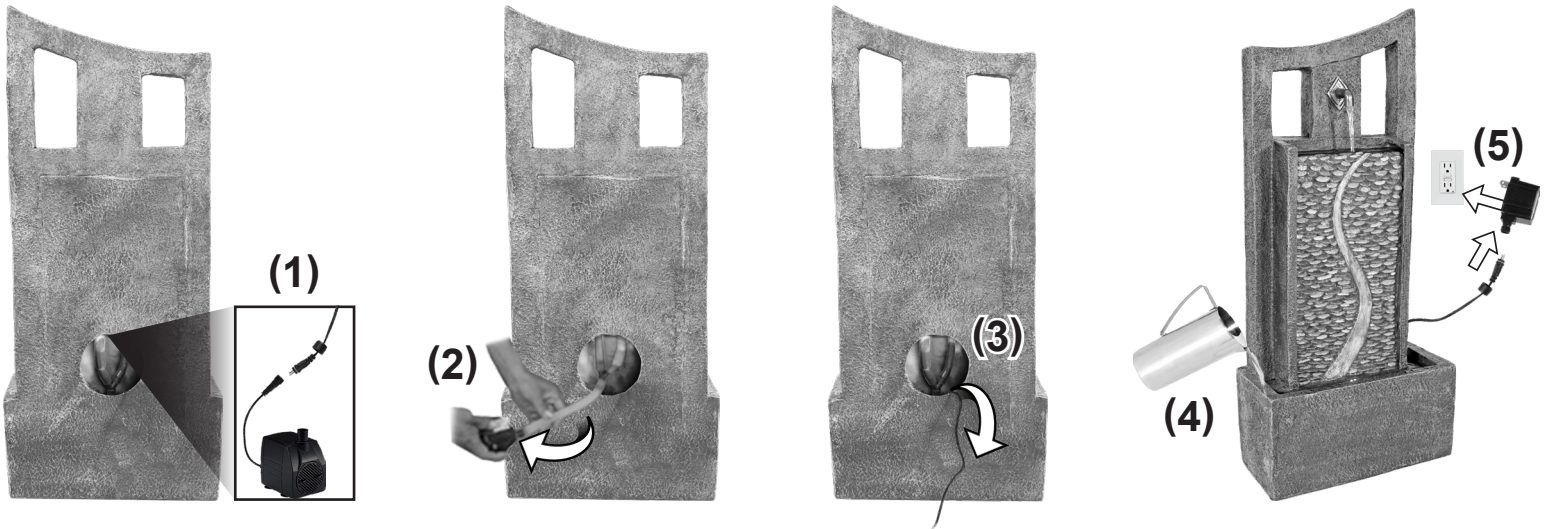


Inspect packaging to ensure all parts are accounted for before disposing of packing materials.

NOTE: The water tubing is built into the fountain. Take care when handling the water tube; detaching the water tube from the fountain will damage the fountain and void the product warranty.

TIP: Familiarize yourself with the pump. Water flow is controlled by a switch on the front of the pump. Moving the switch to (+) increases water flow, (-) decreases water flow.

ASSEMBLY



1. Firmly attach the short cable on the pump to the light cable that is built into the fountain body.
2. Attach the submersible electric pump to the tubing that is built into the fountain body; the tube will fit snugly on the hose adapter.
3. Place the pump inside the fountain body and run the power cord out the opening in the back of the fountain.
4. Fill the fountain with enough water to keep the pump fully submerged during operation, approximately 3 gallons.
5. Firmly connect the pump power cable to the adapter and plug the power cord into a properly grounded GFCI outlet.

NOTE: When first used, there may be air trapped in the pump. It may take several minutes for trapped air to escape, allowing water to flow. You may need to add more water after the pump begins to circulate water through the fountain.

Care & Maintenance

- For outdoor use only. Some splashing is normal; adjust the flow rate on the pump to reach desired flow rate.
- Some climates and weather conditions increase water evaporation which require additional water to be added more frequently. Regularly check water levels during high temperatures, windy conditions, and after long-term exposure to direct sunlight to ensure the pump does not run dry. Never allow the pump to run dry as it will burn out the motor.
- Only use water in this fountain. Distilled water will help prevent mineral buildup but is not required. Tap water is okay to use, but avoid heavily chlorinated water as it may damage the fountain and the pump.
- Periodically change the water to keep the water, fountain, and pump clean. Remove scale and buildup regularly.
 - NEVER use harmful additives such as bleach, chlorine, etc.
 - NEVER use anything that is abrasive to scrub the fountain.
 - NEVER use a pressure washer or high-pressure sprayer/nozzle to fill or clean the fountain.
- Always unplug the power supply before cleaning and maintaining the fountain and the recirculating pump. Take care when handling the pump; only pick it up by the body of the pump, never the power cord.
- During freezing weather, drain the fountain, disconnect the pump and store indoors; allowing ice to form may damage the fountain in such ways as, but not limited to, fountain cracking and/or permanent pump damage.
- Over time, the finish may gradually mellow in color due to sun exposure; this is part of the natural aging process and is not cause for return.

Troubleshooting

- Ensure the pump is fully submerged under the water.
- If water is not flowing within several moments of the power cord being plugged in, the pump may have air bubbles trapped in it, which can prevent water from circulating properly and/or may cause excess pump noise. Simply unplug the power supply for a few moments and plug it back in.
- If water is still not flowing, inspect the pump and tubing for obstructions.
- Check the flow control on the body of the pump, it may need to be adjusted to achieve the desired water flow rate.
- Pump noise can be caused by trapped air, low water level, or the pump being too close to the sides of the fountain. Check the pump. Try moving the pump and/or adding water to help reduce pump noise.
- Soft surfaces may cause the fountain to become unbalanced. A large stepping stone or paving stone (not included) is recommended to help ensure the fountain remains evenly balanced.
- If the light is not working, ensure the cables are fully connected and the seal is adequately tightened (do not over-tighten). Ensure connector ends are dry before connecting and plugging the power cord back into an outlet.
- Check to make sure the power outlet is working; consult a certified electrician if in doubt about electrical connections.

If you continue to experience problems, have issues with assembly, or the product was damaged during shipping, please contact our customer service team directly via one of the methods mentioned at the top of page 1.

Please have the item number and order information ready to expedite response time.



IMPORTANT SAFETY INFORMATION



- For outdoor use only.
- Keep fountain out of reach of children and pets.
- Make sure the power cord is away from traffic areas.
- Keep power cord away from all heat sources. Do not use electrical cords in areas with high temperatures.
- Check the water level frequently to ensure the pump remains fully submerged; never allow the pump to run dry as it will burn out the motor.
- Always unplug the power supply before cleaning and maintaining the fountain and the recirculating pump.
- Always empty and store the fountain and pump indoors during freezing weather.

Any modification to the product or failure to follow recommended care will void the product warranty.

WARNING:

Manufacturer and seller expressly disclaim any and all liability from personal injury, property damage or loss, whether direct or indirect, or incidental, resulting from the incorrect attachment, improper use, inadequate maintenance, or neglect of this product.